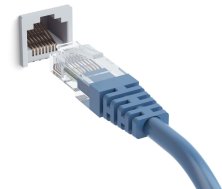


Information: File-Sharing Requirements

All class assignments will be file-shared to Associate Professor Wendy Roussin's office computer.

To File-Share on the MSU Campus network – your MAC computer must be connected to the network via a wired (Ethernet) connection.



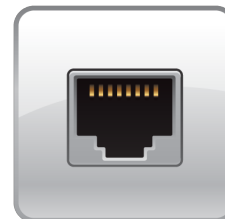
Neither Mississippi State University or the Department of Communication provides ethernet cables (or adapters, if needed).

You will need either an RJ-45 ethernet cable (Either CAT5 or CAT6 is fine) to connect your computer to the wired campus network. These cables are readily available in electronics stores, hardware stores, drug stores some grocery stores and also online. RJ-45 cables look very similar to a standard telephone cable but are slightly larger (see below).

Ethernet Cable



Ethernet Port



Your computer may or may not have an ethernet port. If you have an ethernet port – it will look like a large phone jack connector (see above).

Certain Macintosh laptop computers do not have an Ethernet port. If you own one of these computers you will need an ethernet connector cable (Either USB-C to Ethernet, newer models or Thunderbolt to Ethernet, older models). Please ask for assistance if you are not sure which cable to purchase.

PC USERS

Due to their prevalence in the fields associated with communication industries, the Department of Communication recommends the purchase and use of Apple (MAC OS) computers. If you choose to use a non-recommended computer platform (ie: Windows) – you will need to have a flash-drive formatted for use on both a MAC and a PC. Place your work on the flash-drive when it is ready to turn in and file-share from one of the classroom iMacs.